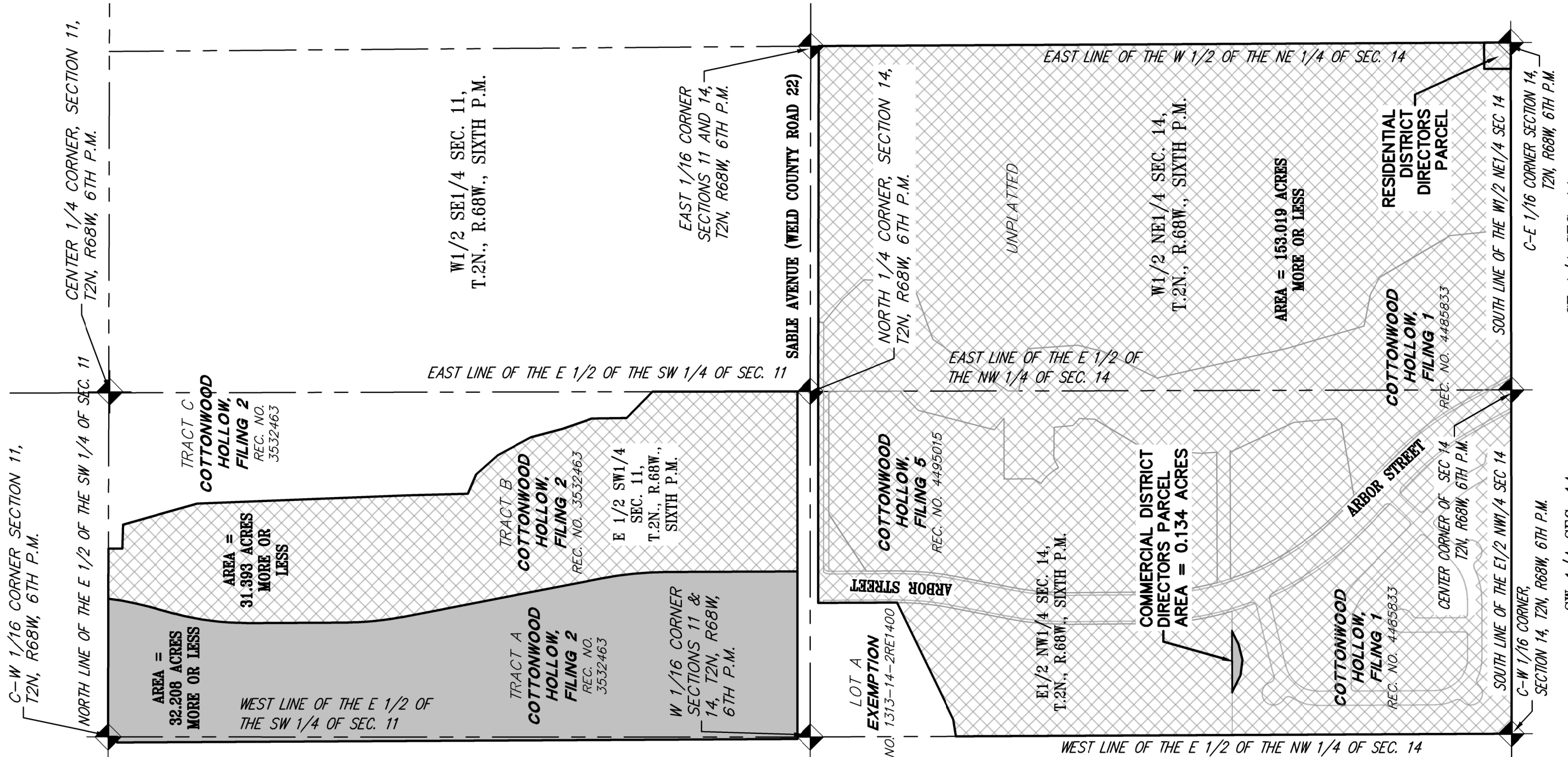
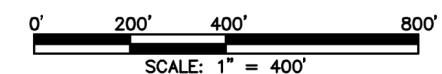


# COTTONWOOD HOLLOW RESIDENTIAL AND COMMERCIAL METROPOLITAN DISTRICT



	RESIDENTIAL DISTRICT + DIRECTORS PARCEL (TOTAL ACRES = 184.412)
	COMMERCIAL DISTRICT + DIRECTORS PARCEL (TOTAL ACRES = 32.342)



**AZTEC**  
CONSULTANTS, INC.  
AzTec Proj. No.: 168721-01

300 East Mineral Ave., Suite 1  
Littleton, Colorado 80122  
Phone: (303) 713-1898  
Fax: (303) 713-1897  
[www.azteconsultants.com](http://www.azteconsultants.com)

**COTTONWOOD HOLLOW**  
RESIDENTIAL AND COMMERCIAL  
DISTRICT MAP  
WELD COUNTY, COLORADO

DATE OF PREPARATION:	06-24-2021
SCALE:	1"=400'
SHEET 3 OF 3	